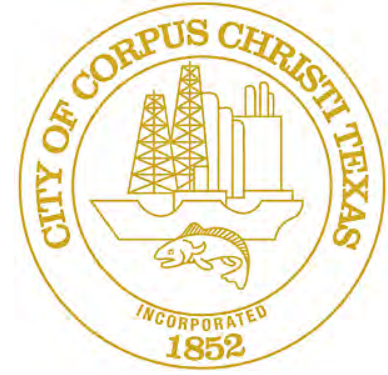


# Mary Rhodes Pipeline Phase 2



## Project Fact Sheet

### Project Information:

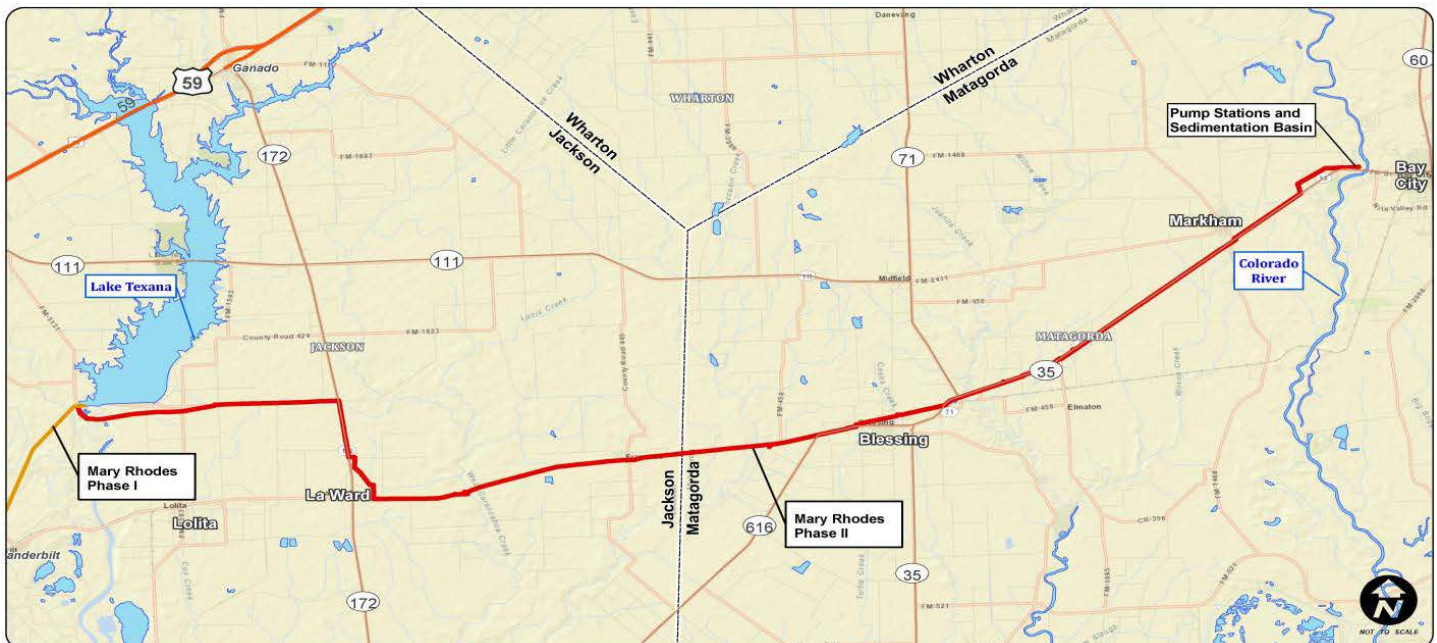
The Corpus Christi regional water system administered by the City of Corpus Christi (Corpus Christi) serves communities in seven Coastal Bend counties, including Aransas, Bee, Jim Wells, Kleberg, Live Oak, Nueces, and San Patricio. Corpus Christi is building a new pipeline to transport purchased surface water from the Colorado River near Bay City to the Lavaca-Navidad River Authority's existing West Delivery Pump Station south of Lake Texana.

The Mary Rhodes Phase 2 Pipeline will tie into Corpus Christi's Mary Rhodes Phase 1 Pipeline, also known as the Texana Pipeline, which currently transports water from Lake Texana to the Coastal Bend Region. The Mary Rhodes Phase 1 Pipeline has been in operation since 1998. The water transported via the Mary Rhodes Phase 2 Pipeline will be used by Corpus Christi customers including various municipal and industrial customers. The project includes the following structures:

- Mary Rhodes Phase 2 water intake structure, river pump station, sedimentation basin, and booster pump station
- 41-mile Mary Rhodes Phase 2 Pipeline (54" diameter pipe)
- Tie-in to the Mary Rhodes Phase 1 Pipeline at the existing West Delivery Pump Station
- Fiber optic communication system

The Mary Rhodes Phase 2 project is a recommended water management strategy identified in the State Water Plan and the Region N Water Plan for meeting the water needs of the Coastal Bend Region. Corpus Christi takes

a long-term approach to water planning and has an excellent record of maximizing the use of its existing water supplies and implementing conservation measures.



## History:

In 1992, Corpus Christi entered into an option agreement with Garwood Irrigation Company (Garwood) for the purchase of 35,000 acre-feet per year (1 acre-foot equals 325,851 gallons). This amount was a portion of Garwood's larger water right, the oldest water right along the Colorado River. Most of Garwood's service area was outside the lower Colorado River Basin with a large portion of its water right used for irrigation of crops in the Lavaca-Navidad River Basin. In 1999, Corpus Christi finalized the purchase of a minority portion of Garwood's right, having received the approval of the Texas Natural Resource Conservation Commission (the predecessor agency to the Texas Commission on Environmental Quality) in 1998. Garwood also sold its remaining water right and related assets to the Lower Colorado River Authority in 1999. With the purchase of the 35,000 acre-feet water right, Corpus Christi was authorized to pump water from the Colorado River at a maximum diversion rate of 298 acre-feet per day.

In 2010, Corpus Christi began the initial steps in planning and designing Mary Rhodes Phase 2 Pipeline. In September of 2011, they completed the preliminary phase of the project, and in October of 2013 they completed the Design Phase of the project. Corpus Christi completed bidding in January 2014 and awarded construction contracts in February 2014. The construction of Mary Rhodes Pipeline Phase 2 started in April.

### PROJECT FACTS

Project Consultant Engineer:	Freese and Nichols
AE Project Manager:	Anne Carrel, P.E.
Contractor:	Garney Companies, Inc. and Oscar Renda Contracting
Construction Manager:	Freese and Nichols, Inc. - Richard Provolt, CCM, CCCA
Project Timeline:	14 months
Award Date:	March 2014
Construction Completion:	June 2015

### PROJECT VALUE

Mary Rhodes Pipeline Phase 2	
Water Revenue Bonds:	\$ 160,629,200

## **Mary Rhodes Pipeline Phase 2**

### **FREQUENTLY ASKED QUESTIONS**

#### ***Why is the project moving forward now?***

This pipeline is a priority project identified in the State Water Plan as a recommended water management strategy for the Coastal Bend water planning Region. The projections in this plan currently show that the Coastal Bend Region will need the Garwood water by the 2020-2030 timeframe so that demands do not exceed supplies.

#### ***When will construction begin?***

Construction of the project started April 2014. It is estimated that it will be completed by summer 2015.

#### ***How will Corpus Christi's use of the Mary Rhodes Phase 2 Pipeline affect groundwater supplies?***

The use of the Garwood water right will not affect groundwater supplies. Corpus Christi will only use surface water from the Colorado River.

#### ***Is Corpus Christi properly managing the use of its current water supplies?***

In the 1980s, Corpus Christi was one of the first cities in the state to develop a water conservation plan and has an outstanding record of effectively implementing conservation measures to reduce per capita water use. In addition, Corpus Christi has been proactive about planning for future industrial and municipal water needs. Refineries in Corpus Christi use approximately 36 gallons of water per barrel of oil refined vs. a statewide average of 100 gallons of water per barrel of oil refined, and a national average of 110 gallons of water per barrel of oil refined.

#### ***How will the use of the Mary Rhodes Phase 2 Pipeline affect the water levels in the Colorado River near Bay City and downstream?***

Corpus Christi will continue to coordinate with the Lower Colorado River Authority (LCRA) to manage the water levels and availability in the Colorado River. The LCRA's water planning water availability models, as well as the Texas Water Development Board's Coastal Bend Region N water use model, have reflected Corpus Christi's full use of the water right for the past decade.

#### ***How will this project benefit the counties along the pipeline route?***

Corpus Christi plans to look for opportunities throughout the construction phase to benefit local communities such as employing local companies in material procurement.

#### ***Will private property from landowners be needed for this new pipeline?***

Yes, Corpus Christi purchased some right of way. However, Corpus Christi minimized the impact to private property as much as possible. Right-of-Way and Title Services and Welder Leshin, LLP assisted Corpus Christi with purchase of private property.

#### ***When will private property be acquired for the pipeline? How much will be paid for property?***

Property was acquired in 2013. The amount paid for property was based on fair market value.